



LAND USE CHANGE DETECTION: USE OF REMOTE SENSING AND GIS TECHNIQUES IN LAND USE MANAGEMENT: RIVERS STATE

Wokocha C.C and Imarhiagbe, O.M

Department of Crop and Soil Science, Faculty of Agriculture, University of Port Harcourt

Abstract: The land use changes were detected using Remote sensing and GIS and this was very important in detecting the nature, rate and location of changes. Change detection of the study area was carried out for the years, 1994, 1999, 2000, 2004, 2005, 2009, 2010, 2014 and 2019. A land use classification scheme was developed for the area. There was a major decline in most of the land use in the study area. This was noted to majority caused by man's activities. Water bodies also experienced a change within the periods worked on. Between 1994 and 1999 the water body area covered was 13576m but decreased to 11784m between 2000 and 2004, despite this fact the study area experienced a lot of flooding in few years past and this was deduced to be caused by illegal dredging activities and sand filling of river paths. Farm lands, built up areas all changed in dimension in different years and all these were attributed to man's activities. Land use change detection was able to help in determining and comparing the percentage changes as well as rate of change and this could help in decision making

Keywords: land use, remote sensing, GIS

Introduction:

Land use involves the management and modification of natural environment or wilderness into built environment such as settlements and semi-natural habitats such as arable fields, pastures, and managed woods. It also has been defined as “the total arrangements of activities, inputs that people undertake in a certain land cover type”. Urban land cover types and their areal distribution are fundamental data required for a wide range of studies in the physical and social science, as well as by municipalities for land planning purposes (Stefanov, 2001). Land use change is a key driver of global change (Vitousek, 1992) and has significant implications for many international policy issues (Nunes and Auge, 1999). In particular, land use changes in tropical regions are of major concern due to the widespread and rapid changes in

the distribution and characteristics of tropical forests (Myers 1993; Houghton 1994).

According to Lillesand et.al (2005), remote sensing data has helped in the development of various environmental management methodologies. Some of the advantages that are synoptic view that facilitate the remote sensing to study the various between type of features of earth's surface and the relation of the spatial. The accessibility of remote sensing data makes it possible to gather the information about areas that impossible to be accessible for ground surveys such as mountains or foreign lands. Since the information can be gathered quickly by using this method, these techniques are more save the time and the effort.

Satellite imagery has been used for measuring qualitative and quantitative terrestrial land cover changes



(Cambell, 2002). Qualitative changes in landscape occur either as natural phenomena or can be human induced

Materials and Methods:

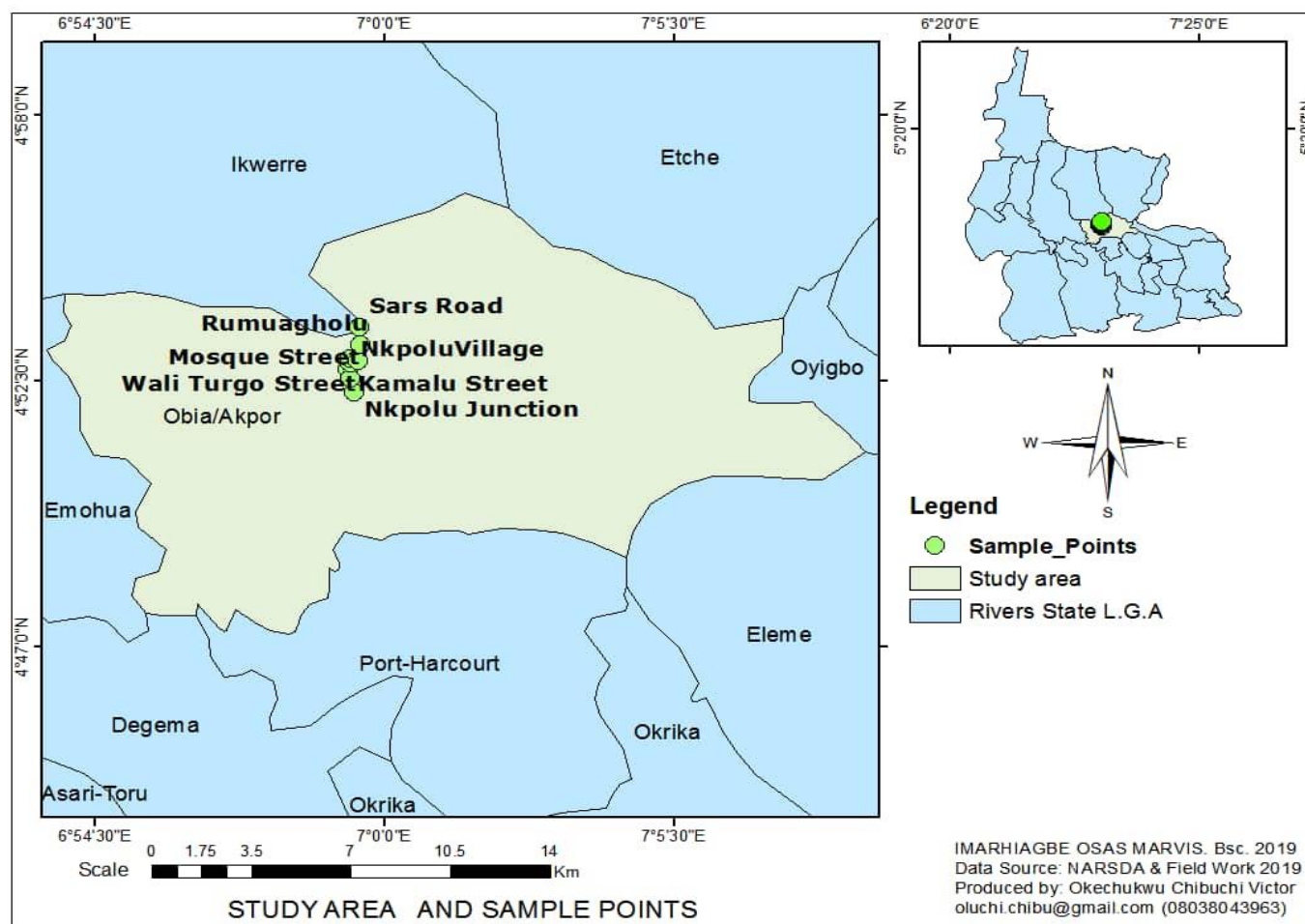
Study area:

This study was conducted at Nkpolu-Rumuigbo Axis of Rivers state. Nkpolu is located in the humid tropics of the Fig. 3.1 Map of Rivers state showing study area:

southern part of Nigeria It lies between Latitude $04^{\circ} 52' 14''$ North and longitude $006^{\circ} 58' 86''$ to the east. It lies in the north and is bordered by Rumuoghalu in the southwest, Obikwere to the east and Obiwalli to the Northwest, all in Obio/Akpor L.G.A..

Fig 1:map of rivers state showing study area:

Source:NASDAR (Abuja,Nigeria)



Maps and Satellite Images :

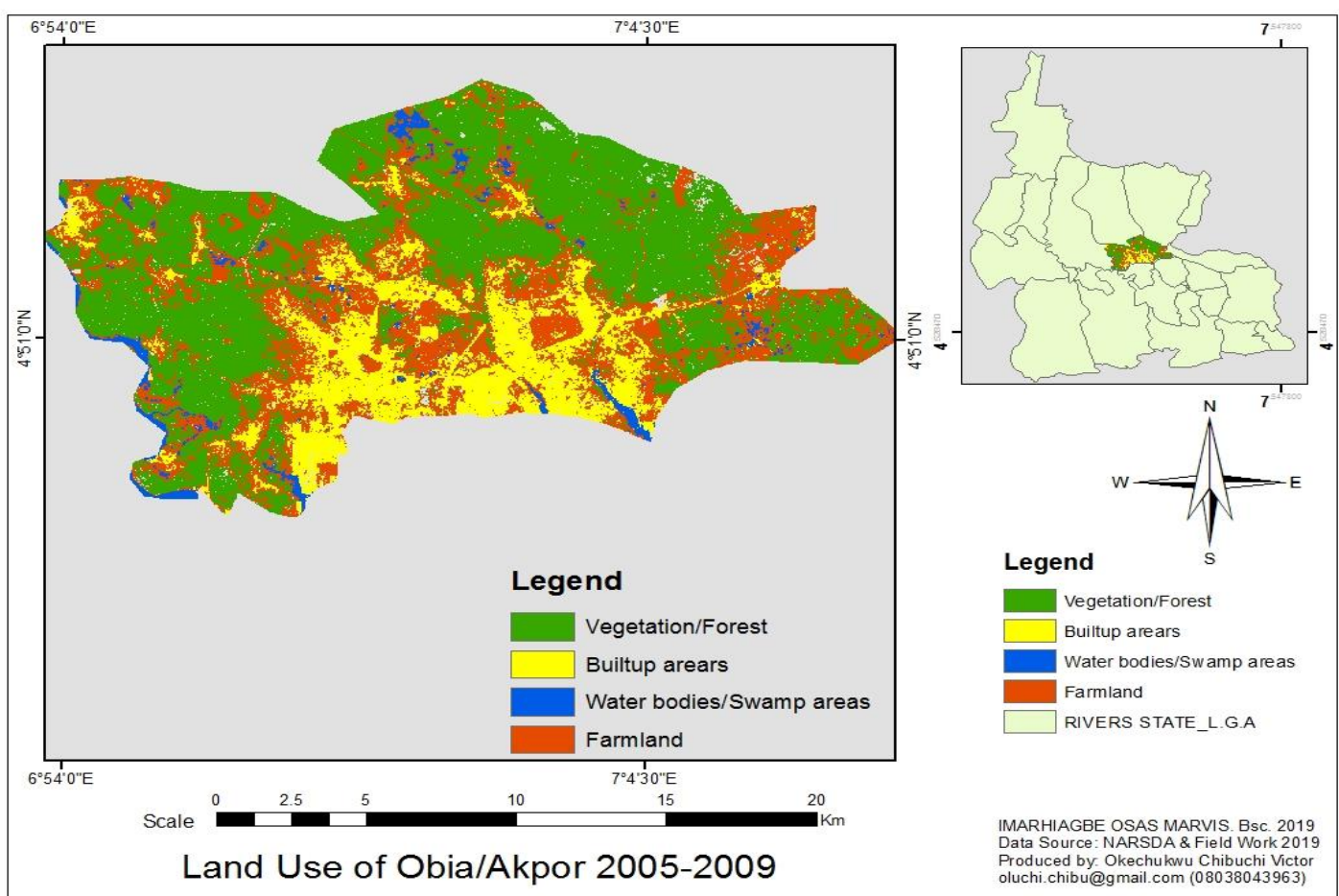
Satellite images were used in the course of the study and were sourced from Departments of Geography and Environmental Management, in University of Port Harcourt.

Land Use Change Analysis::

Landsat Satellite imageries of spatial resolution of 30m (each pixel representing an area on the earth surface of 30 by 30 m), with an altitude of 710 kilometres were acquired. Landsat 7 imageries were used for years 1994 to 1999 and Landsat 8 imageries were used for years 2000 to 2019.

Arc GIS 10.1 was used to perform analysis on the acquired satellite images.

Results and discussion:

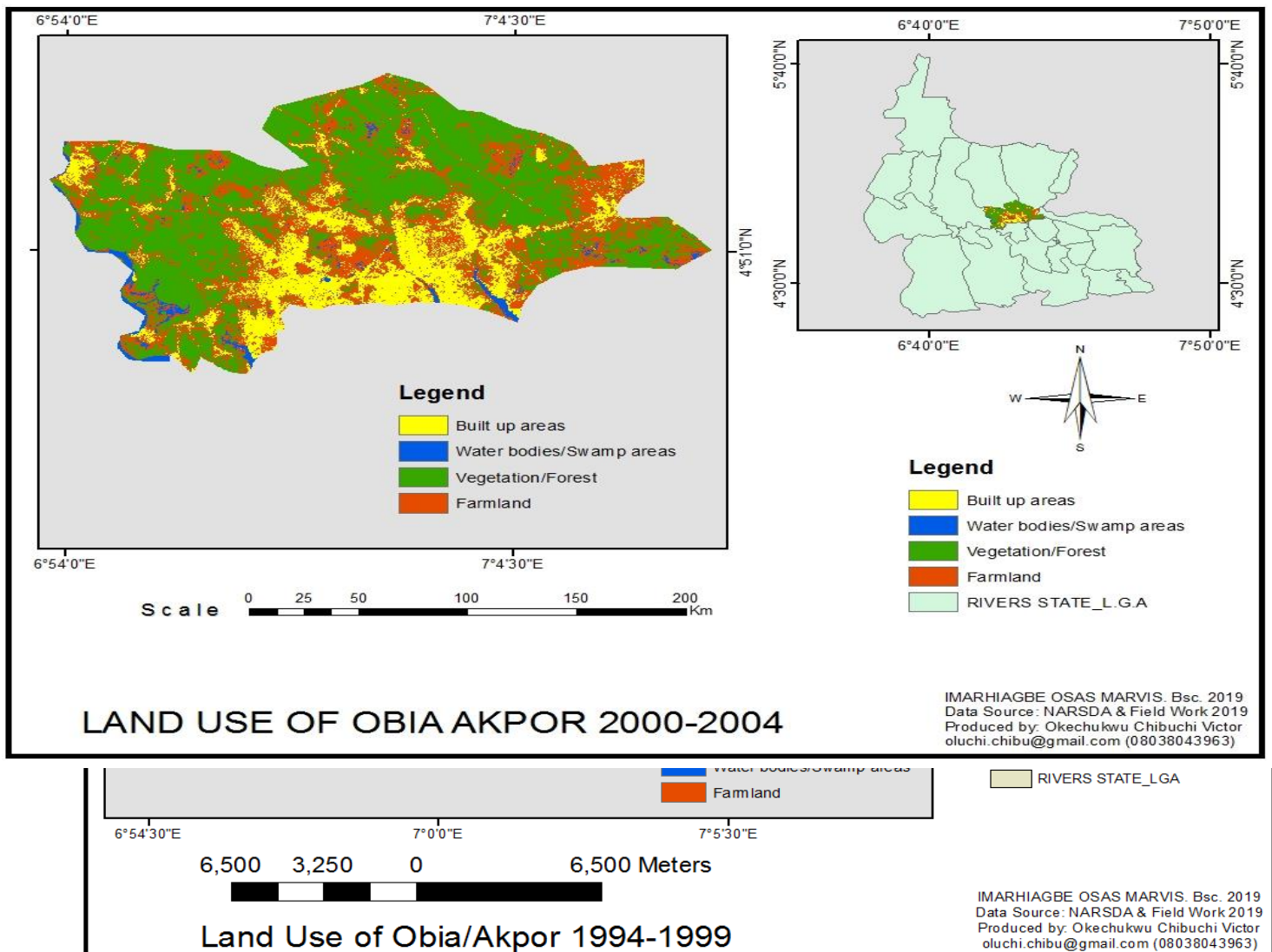


The land use changes were detected using Remote sensing and GIS. Comparison of the study area was done between the years 1994, 1999, 2000, 2004, 2005, 2009, 2010, 2014 and 2019. Land use types were delineated using supervised classification:

Vegetation /forest	Lawns, shrubs, orchards or areas with evergreen growing naturally
Water bodies / swamp	River, permanent open water, lakes, ponds, canals, reservoirs and land that are water logged
Farmlands	Lands used mainly for growing crops. It includes crop field and fallow lands
Built areas	All residential, commercial and industrial areas, settlements and transportation infrastructure

Table 1: Land use classification scheme

Fig 1 Land use change map of Obia/Akpor (1994-1999)



Vegetation was very prominent in the study area between the years 1994-1999. This was followed by farmlands which also covered significant areas in the study area. Water bodies were not so prominent in the study area at that period. And covered a small percent of the study area. The occupants of the study area were mostly farmers with an almost zero percent presence of industrialization. The built areas occupied less space.

Fig 2: Land Use change map of study area 2000-2004

Farmland size reduced between 2000 and 2005, this was due to an increase in man's activities (industrialization). These activities took over the spaces formerly occupied by farmlands. Also most of the farmers left the farms in quest of white collar jobs.



Fig 3:Land Use change map of the study area 2005-2009.

Further changes occurred between the years 2005 to 2009. Extreme changes, caused by an increase in mans activities in the study area (industrialization, oil and gas exploration), There was increased flooding in the study area due to blocking of canals and river beds by mans activities

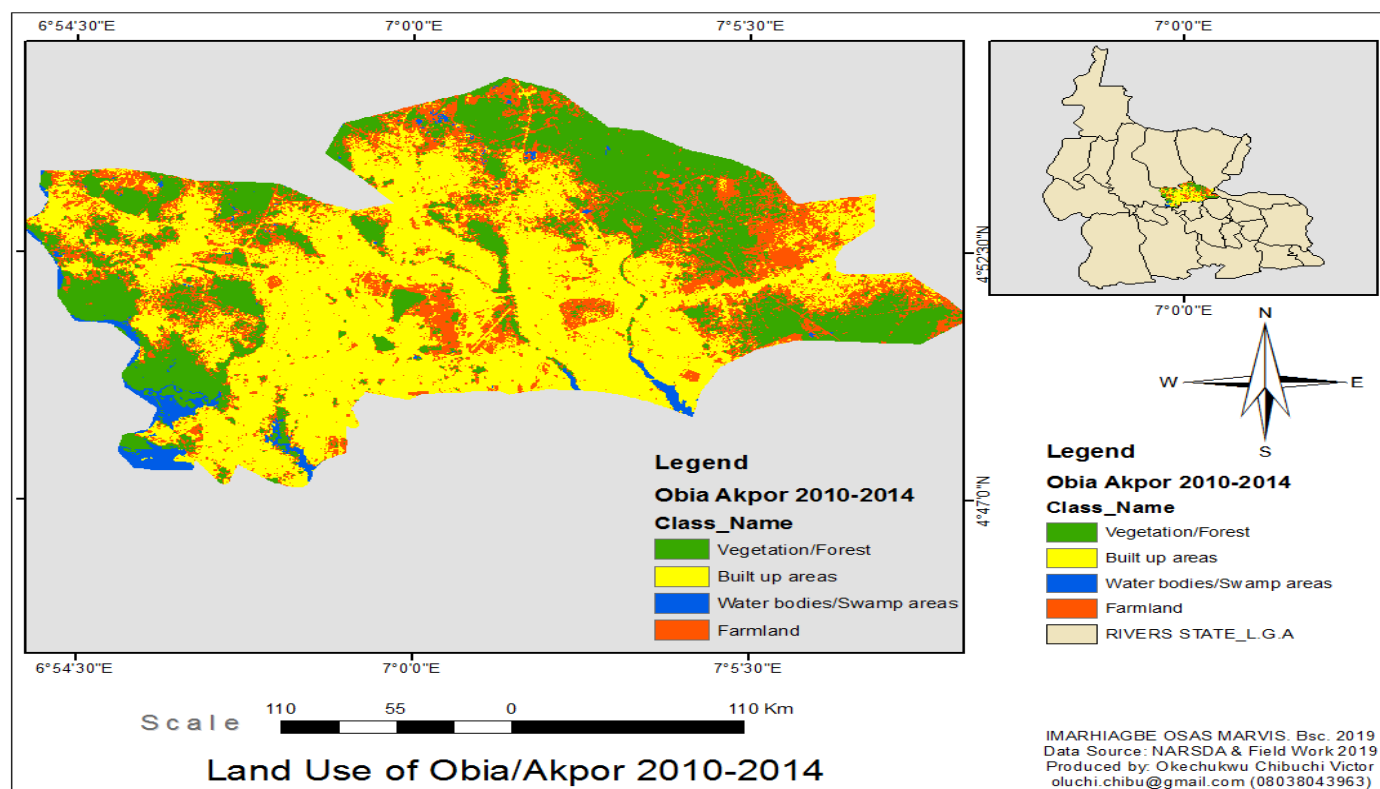


Fig 4: Land use change map of the study area 2010-2014

Between 2010 and 2014, there was a notable increase in built up areas as much of the forested areas and farmlands were destroyed to give way for industrialization.

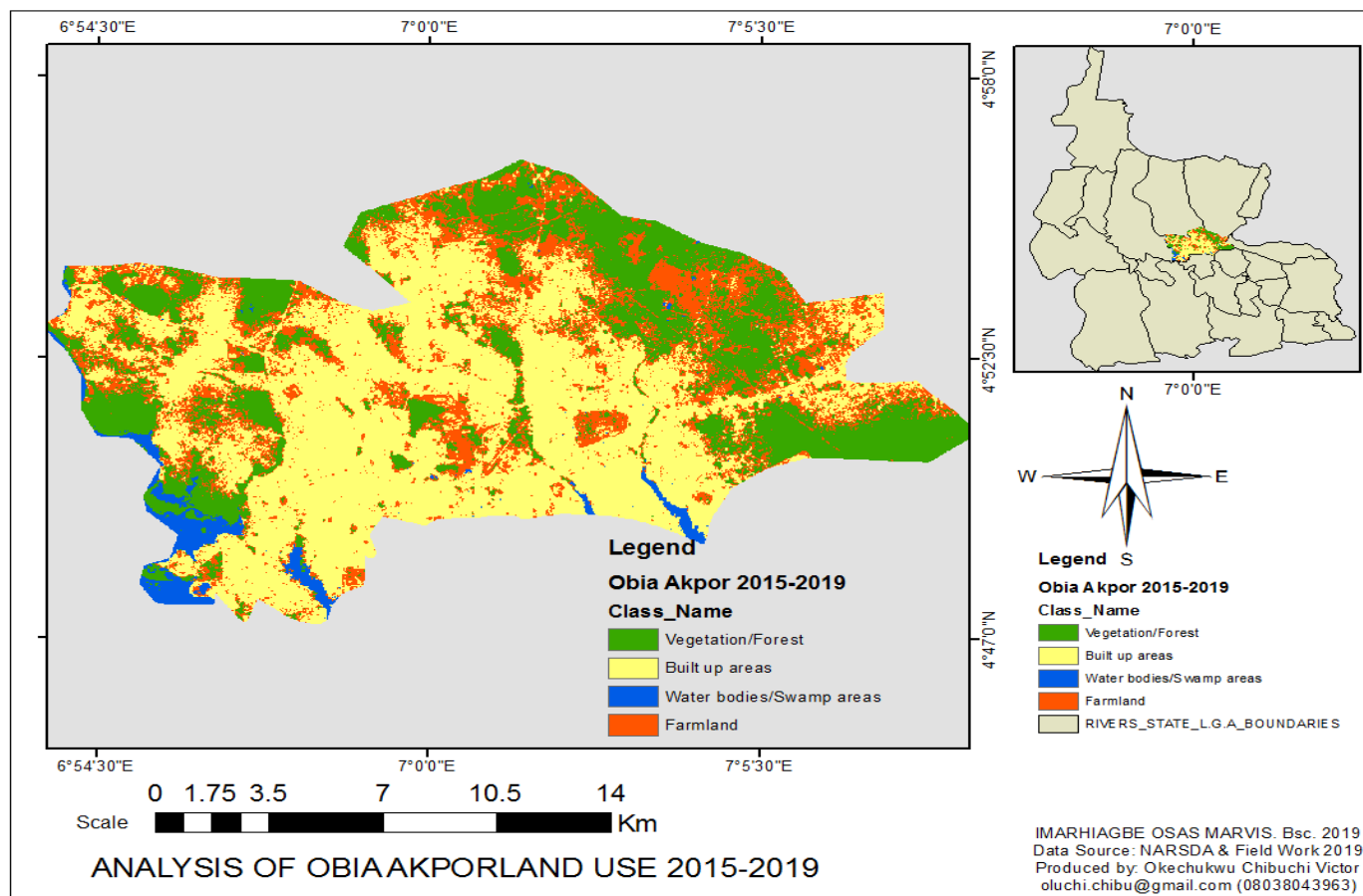


Fig 5: Land Use change of the study area 2015-2019

At this period of the study, there was obviously an absence of most of the vegetal cover in the study area,(farmlands and forest).These had all been wiped of due to mans activities..Very few farmlands were in existence in the study area.

Land use type	1994-1999 Area(m ²)	2000-2004 Area (m ²)	2005-2009 Area (m ²)	2010- 2015 Area (m ²)	20150-2019 Area (m ²)
Vegetation/ Foreat	164001	163267	147341	135230	124120
Water bodies/ Swamps	13576	11784	9822	9447	8354



Farm land	100503	23848	21975	14307	10432
Built up areas	8926	88107	107868	128022	144100
Total	287006	287006	287006	287006	287006

Table 2 **Area Change in Land use distribution types (m):**

Source: Researcher's Compilation (2019)

As can be seen from Table 4, there was a constant reduction in the land use types of the study area. Vegetation reduced from 164001m to 124120 m. While water bodies recorded a decrease of 13576m to 8354m in 2019. Farmlands also suffered the same fate, from 100503m to 10432m. The built up area was the only land use type that had an upsurge of 8926m to 144100m, this is completely due to mans activities as well as industrialization and oil and gas exploration in the study area..

Fig 6 Land Use Dynamics 1994-2019(M)

Land use change	1994-1999 (%)	2000-2004 (%)	2005-2009 (%)	2010-2014 (%)	2015-2019 (%)
Vegetation/forest	58.4	56.9	51.3	47.1	43.2
Water bodies	4.7	4.1	3.4	3.3	2.9
Farm land	35	8.3	7.6	4.9	3.6



Built up areas	3.1	30.7	37.6	44.6	50.2
-----------------------	-----	------	------	------	------

Table 3 land use change in percentage

From the above table of percentage change, it shows that vegetation decreased drastically from 58.4% t,while water bodies frightenly reduces in area space from 4.7% to 2.95 in a 24 year stretch..This very sad decrease was also noted on the farmland land use type wghich decreased from 35% to 3.6% in the study area.Built up areas maintained a constant increase from 3.1% to 50.2 % all through the years studied.

Conclusion :

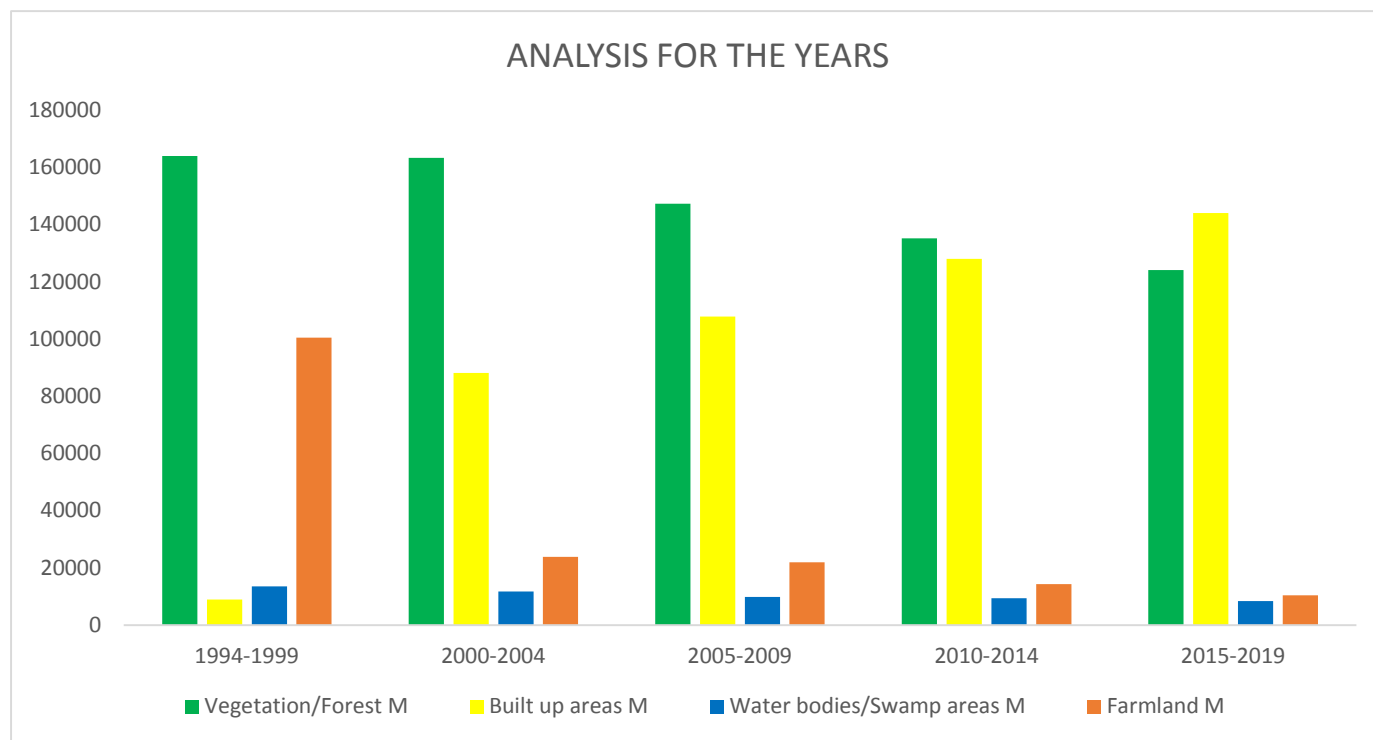
The anthropogenic activities of man have led to the reduction of the studied land use types.This decrease is mainly due to the continuous increase in population and diversification of humans activities and these activities

pollution, land degradation, loss of soil nutrient if not properly managed or controlled in time.

It has also been shown that the use of remote sensing and geographical information system (GIS) in the classification of land use changes can not be overemphasized as seen in this using the technology using,,Landsat 7 and 8 with a resolution of 30m X 30m and arcGIS 10.1 giving a clear differentiable change of the different classes of land use changes.

Recommendations:

- There is the need for ecosystems restoration in the study area.



can cause negative impairment such as environmental



- ii. The population must be educated on the implication of the existing situation.
- iii. Legislations compelling environmental protection, restoration and remediation need to be enforced.
- iv. There is urgent need for the governments through appropriate land use planners to embark on data gathering on critical environmental variables, using Remote sensing and GIS techniques as well as in-situ and field measurements.

Reference

- Campbell, J.B. (2001): *Introduction to Remote Sensing*, The Guilford press
- Lillesand, T. M and Kiefer, R W. (1987): *Remote sensing and Image interpretation*, 2nd edition, John Wiley and Sons
- Meyer, W. B., 1993. Past and Present Land-Use and Land- Cover in the U.S.A: Consequences pp. 24-33.
- Nunes, C., Auge J.I., 1999. Land-Use and Land-Cover Implementation Strategy (Stockholm: IGBP).
- Stefanov, W.L., Ramsey, M.S., Christensen, P.R., 2001, Monitoring Urban Land Cover
- Change: An Expert System Approach To Land Cover Classification Of Semiarid To
- Arid Urban Centers, Remote Snsing Of Environment, Vol.77, pp.173-185.
- Vitousek, P.M., 1992. Global Environmental Change: An introduction. Ann. Rev. Ecol. Syst. 23: 1-14.

